

# SERAPHIM MODULE 245~260watt

6inch 60cells  
Upgraded Warranty

**DuraFlex™**



6PB

## Electrical Characteristics

	SRP-245-6PB	SRP-250-6PB	SRP-255-6PB	SRP-260-6PB	Unit
Rated Power	245	250	255	260	W
Power Tolerance	(0,+4.99)	(0,+4.99)	(0,+4.99)	(0,+4.99)	W
Rated Maximum Power	249.99	254.99	259.99	264.99	W
Module Efficiency (ηm)	15.06%	15.37%	15.67%	15.98%	%
Open Circuit Voltage(Voc)	37.38	37.62	37.80	38.04	V
Short Circuit Current (Isc)	8.62	8.74	8.88	8.99	A
Maximum Power Voltage (Vmp)	31.26	31.62	31.80	32.04	V
Maximum Power Current (Imp)	7.84	7.91	8.02	8.11	A
Maximum System Voltage	1000 (TUV), 600 (UL)				V
Maximum Series Fuse Rating	15				A

STC: Irradiance 1000 W/m<sup>2</sup>, module temperature 25°C, AM=1.5;  
Power measurement tolerance: +/-3%

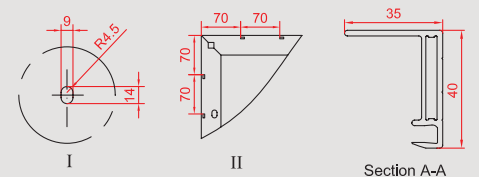
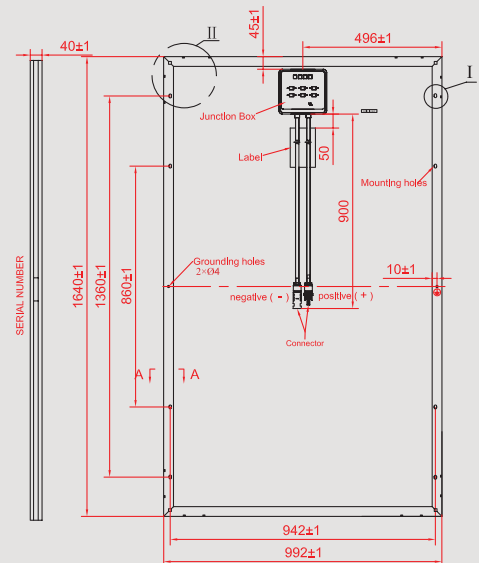
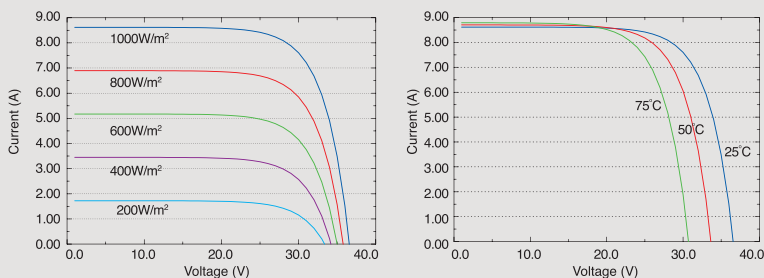
## Temperature Characteristics

Pmax Temperature Coefficient	-0.42 %/°C
Voc Temperature Coefficient	-0.32 %/°C
Isc Temperature Coefficient	+0.04 %/°C
Operating Temperature	-40~+85 °C
Nominal Operating Cell Temperature (NOCT)	45±2 °C

## Packing Configuration

Container	20'GP	40'GP	40'HC
Pieces per pallet	26	26	N.A
Pallets per container	12	28	N.A
Pieces per container	312	728	N.A

## Current-Voltage & Power-Voltage Curve (SRP-240-6PB)



\* All Dimensions in mm

\* The above drawing is a graphical representation of the product. For engineering quality drawings please contact SERAPHIM.

## Mechanical Specifications

External Dimensions	1640 x 992 x 40 mm
Weight	19.0kg
Solar Cells	Polycrystalline 156 x 156mm (60pcs)
Front glass	3.2 mm tempered glass, low iron
Frame	Anodized/ Electrophoretic aluminum alloy
Junction Box	IP65/IP67
Output Cables	4.0 mm <sup>2</sup> , symmetrical lengths 900mm
Connector	MC4 Compatible
Maximum Snow Load	550kg/m <sup>2</sup>
Maximum Wind Load	200km/h
Hailstone Impact Test	80km/h for 25mm ice ball